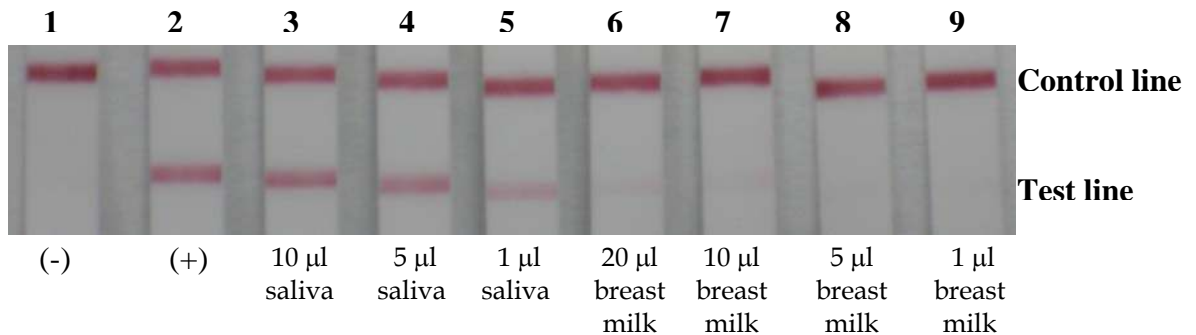


## Notebook locator: BS.1.06.84 - RSID-Saliva: Test of cross-reaction with breast milk

Objective: To more rigorously investigate the reported low-level cross reaction between RSID-Saliva and breast milk.

Methods: Breast milk that was collected in a manner that was designed to minimize the chance of saliva contamination: washed skin area and without the use of a breast pump. Sample from participating laboratory under informed consent. 50  $\mu$ l of milk was pipetted onto a cotton swab that was air-dried and subsequently extracted in 1 ml of PBS. 20, 10, 5 and 1  $\mu$ l of breast milk extract was analyzed with RSID-Saliva. At the same time, 20, 10, 5 and 1  $\mu$ l of saliva extract was analyzed for comparison.

Strip	Extract Analyzed	Result at 10 minutes (T/C)
1	20 $\mu$ l sham	0/10
2	20 $\mu$ l saliva	9/10
3	10 $\mu$ l saliva	8/10
4	5 $\mu$ l saliva	7/10
5	1 $\mu$ l saliva	4/10
6	20 $\mu$ l breast milk	2/10
7	10 $\mu$ l breast milk	2/10
8	5 $\mu$ l breast milk	1/10
9	1 $\mu$ l breast milk	1/10



Results: Breast milk demonstrates a consistent low level reaction with RSID-Saliva. We estimate that breast milk is 20 fold less reactive than human saliva.